

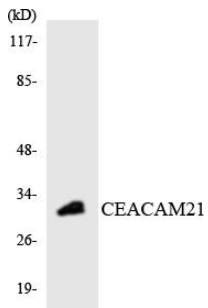


# CEACAM21 Polyclonal Antibody

<b>Catalog No</b>	YP-Ab-16949
<b>Isotype</b>	IgG
<b>Reactivity</b>	Human
<b>Applications</b>	WB;ELISA
<b>Gene Name</b>	CEACAM21
<b>Protein Name</b>	Carcinoembryonic antigen-related cell adhesion molecule 21
<b>Immunogen</b>	The antiserum was produced against synthesized peptide derived from human CEACAM21. AA range:171-220
<b>Specificity</b>	CEACAM21 Polyclonal Antibody detects endogenous levels of CEACAM21 protein.
<b>Formulation</b>	Liquid in PBS containing 50% glycerol, 0.5% BSA and 0.02% sodium azide.
<b>Source</b>	Polyclonal, Rabbit,IgG
<b>Purification</b>	The antibody was affinity-purified from rabbit antiserum by affinity-chromatography using epitope-specific immunogen.
<b>Dilution</b>	Western Blot: 1/500 - 1/2000. ELISA: 1/10000. Not yet tested in other applications.
<b>Concentration</b>	1 mg/ml
<b>Purity</b>	≥90%
<b>Storage Stability</b>	-20°C/1 year
<b>Synonyms</b>	CEACAM21; Carcinoembryonic antigen-related cell adhesion molecule 21
<b>Observed Band</b>	32kD
<b>Cell Pathway</b>	Membrane ; Single-pass type I membrane protein .
<b>Tissue Specificity</b>	Testis,
<b>Function</b>	similarity:Belongs to the immunoglobulin superfamily. CEA family.,similarity:Contains 1 Ig-like C2-type (immunoglobulin-like) domain.,
<b>Background</b>	similarity:Belongs to the immunoglobulin superfamily. CEA family.,similarity:Contains 1 Ig-like C2-type (immunoglobulin-like) domain.,
<b>matters needing attention</b>	Avoid repeated freezing and thawing!
<b>Usage suggestions</b>	This product can be used in immunological reaction related experiments. For more information, please consult technical personnel.



## Products Images



Western blot analysis of the lysates from HT-29 cells using CEACAM21 antibody.